

TRACT 44 OF WELLINGTON, P. U. D.

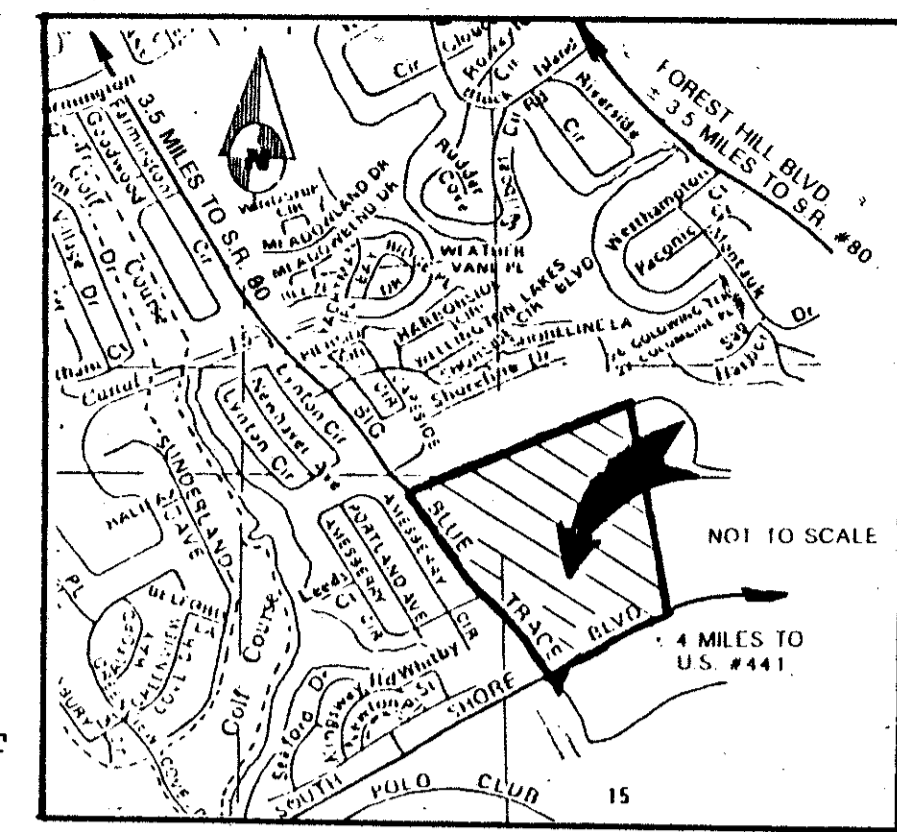
BEING A REPLAT OF A PART OF TRACT 43 WELLINGTON P. U. D. AS RECORDED IN PLAT BOOK 44, PAGE 61, INCLUSIVE, OF THE PUBLIC RECORDS OF PALM BEACH COUNTY, FLORIDA, AND OTHER LANDS

IN PART OF SECTIONS 10 AND 15 TOWNSHIP 44 SOUTH, RANGE 41 EAST PALM BEACH COUNTY, FLORIDA

SHEET NO. 3 OF 3 SHEETS
OCTOBER 1990

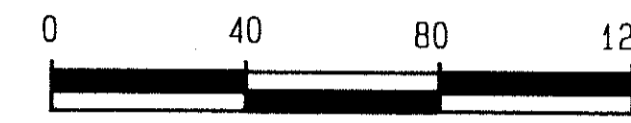
LEGEND

- ± = MORE OR LESS
- △ = CENTRAL ANGLE
- = CENTERLINE
- A = ARC LENGTH
- COR. = CORNER
- O.R.B. = OFFICIAL RECORD BOOK
- P.B. = PLAT BOOK
- P.C. = POINT OF CURVATURE
- PGS. = PAGES
- P.O.C. = POINT OF COMMENCEMENT
- P.O.B. = POINT OF BEGINNING
- P.R.M. = PERMANENT REFERENCE MONUMENT
- P.U.D. = PLANNED UNIT DEVELOPMENT
- R = RADIUS
- R/W = RIGHT-OF-WAY
- SEC. = SECTION

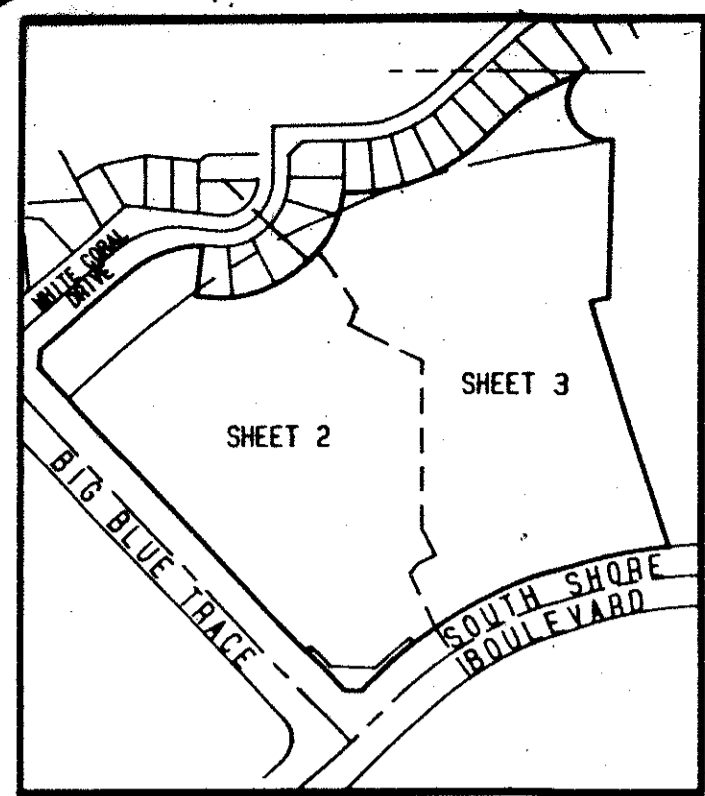


LOCATION MAP

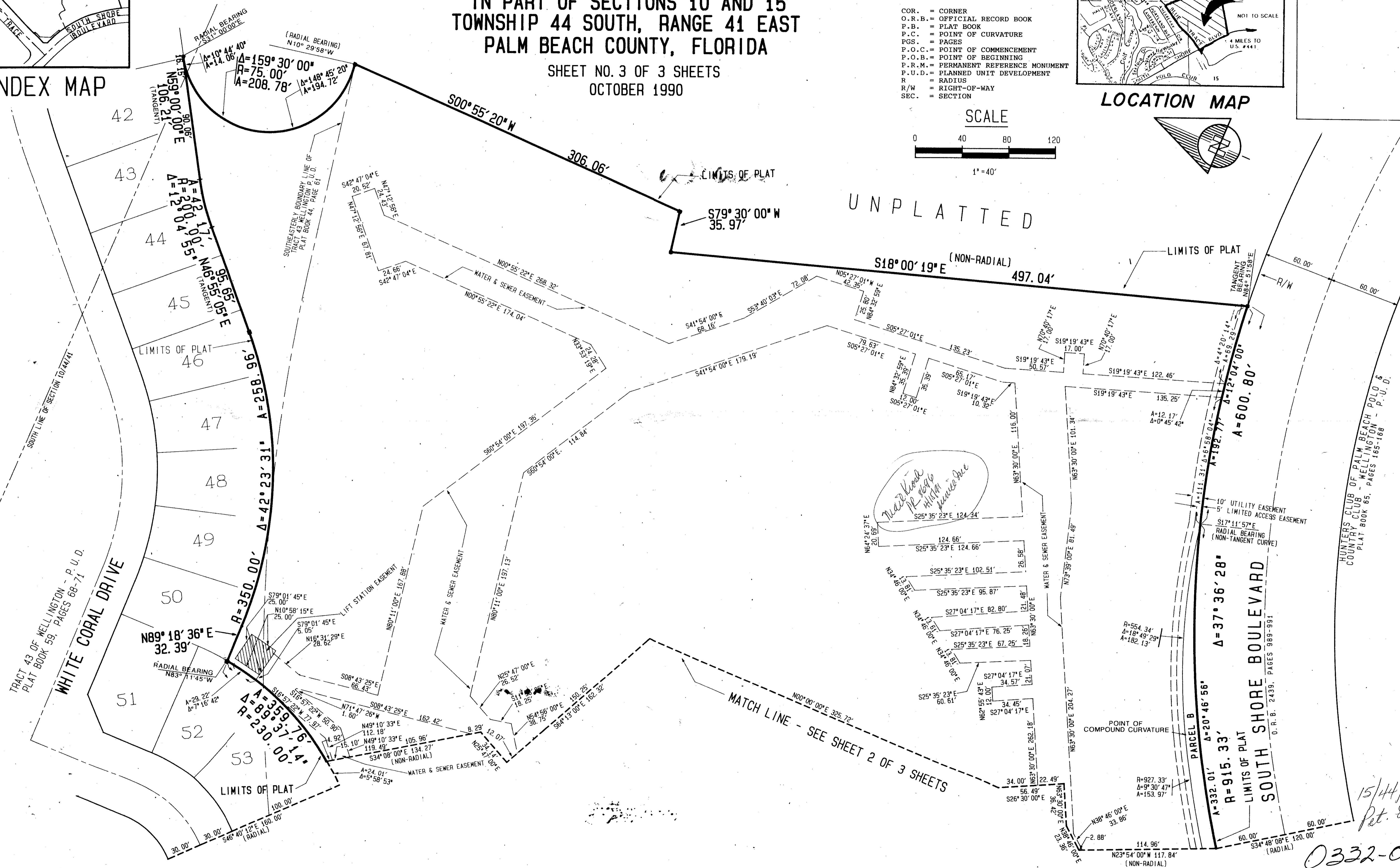
SCALE



1" = 40'



INDEX MAP



SUBDIVISION # TRACT 44 OF WELLINGTON P.U.D.
 BOOK (PT) PAGE 13
 FLOOD MAP # FCB
 RECORD # 86-32
 ZIP CODE 33414

TAR 192

15/4/41
Pet. 86-32

0332-093

TRACT 44 OF WELLINGTON 07/13

Dailey-Fotony, inc.
 land surveyors, planners, engineers
 5050 10th Avenue North, Suite B Lake Worth, Florida 33463-2602
 Phone 407-965-8787